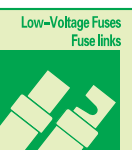


Round Cartridge Fuse Links With Knife Contacts



► Applications

Protection against overload and short-circuit in electric lines and equipments (type gG), also available for protection of motors (type aM).

Rated voltage up to 600V; Rated current up to 630A; Working frequency 50Hz AC; Rated breaking capacity up to 100KA. Compliant with GB13539 and IEC269.

► Design Features

Variable cross-section fuse element made from pure metal sealed in cartridge made from high temperature resistant epoxy glass. Fuse tube filled with chemically treated high-purity quartz sand as arc-extinguishing medium. Dot-welding of fuse element ends to the knife contacts ensures reliable electric connection.

► Basic Data

The models, dimensions, ratings are shown in Figures 2.1~2.2 and Tables 2 .

Table 2

Cat. No.	Models		Rated voltage (V)	Rated current (A)	Dimensions/sizes (mm)										Weight (g)
	MIRO	Cross reference			Fig.	A	B	C	E	F	K	L	N		
0201	RO20	-	600	63~100	2.1	200	34	25	3	19	12.5	7	6.5	272	
0202	RO20A	-	250	63~100	2.1	149	27	25	3	19	12.5	7	6.5	139	
0203	RO20B	-	250	101~200	2.1	181	40	35	5	28	17.5	7	11	394	
0204	RO20C	-	600	101~200	2.1	244	46	35	5	28	17.5	7	11	610	
0205	RO20D	FRS-R	250	201~400	2.1	219	53	48	6	41	24	10.5	16	740	
0206	RO20E	-	600	201~400	2.1	295	66	48	6	41	24	10.5	16	1510	
0207	RO20F	-	250	401~630	2.1	264	66	57	6	51	28.5	13.5	19	1250	
0208	RO20G	-	600	401~630	2.1	340	76	57	6	51	28.5	13.5	19	2320	

Note: The above products can be made as Figure 2.2 .

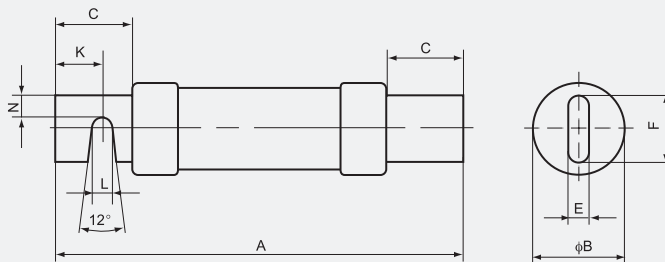


Figure 2.1

Table 2 (cont.)

Cat. No.	Models MIRO	Cross reference	Rated voltage (V)	Rated current (A)	Dimensions/sizes (mm)						Weight (g)
					Fig.	A	B	C	E	F	
0209	-	OT100	250	63~100	2.2	151	27	29	3.2	19.1	120
0210	-	OT200	250	101~200	2.2	181	40.3	37.5	4.8	28.6	320

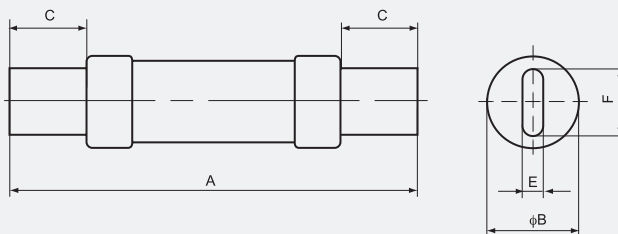


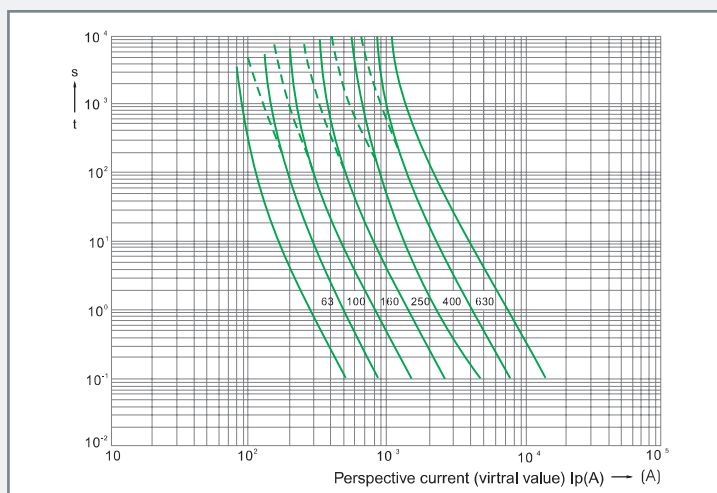
Figure 2.2



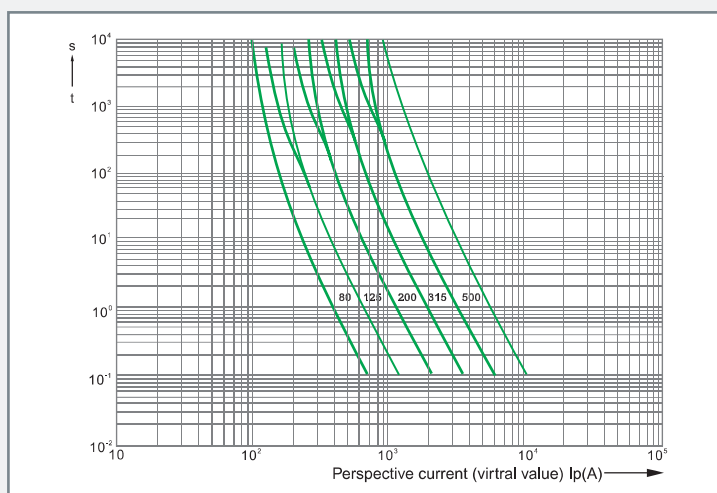
Low-Voltage Fuses
Fuse links



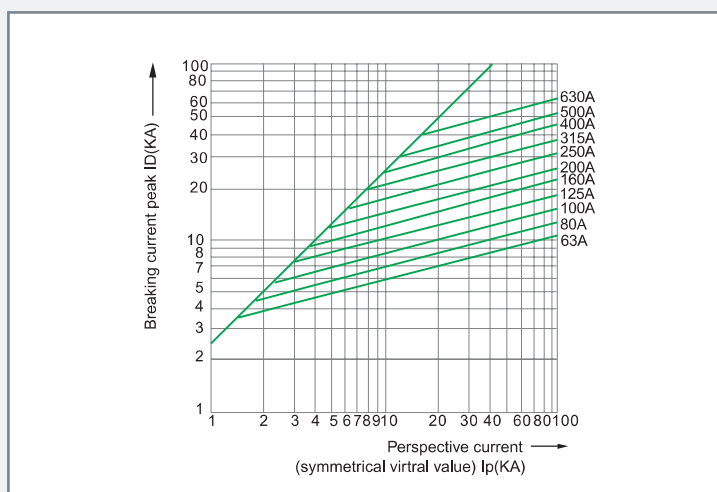
► **Characteristics Curve**



Time-current range of "gG" fuse links



Time-current range of "gG" fuse links



Breaking current characteristics curve of "gG" fuse links